

WHO IS A CLOSE CONTACT AT WORK?

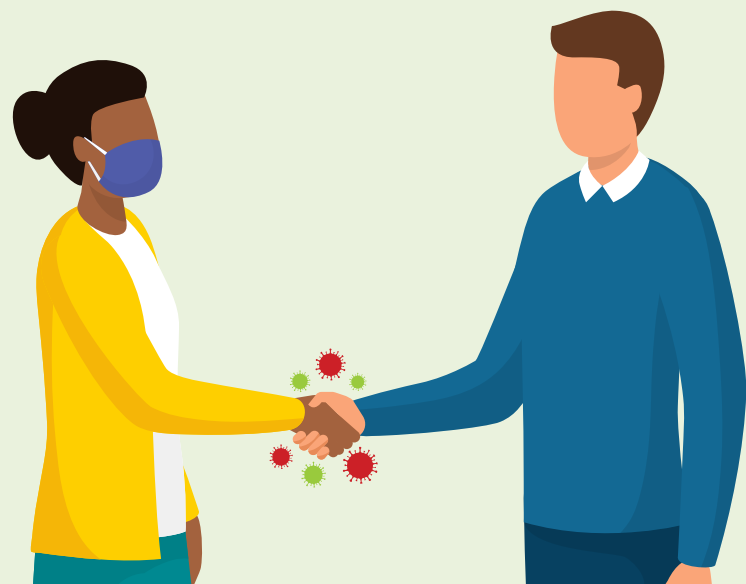
CLOSE CONTACT

You were within 6 feet, or 2 metres distance for more than 15 minutes, even if you were both wearing a mask.



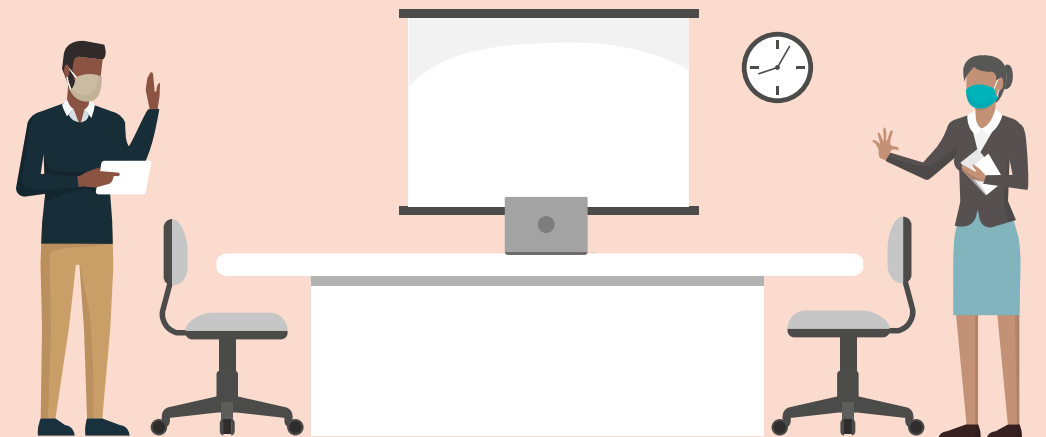
NOT CLOSE CONTACT

You maintained a 6 feet, or 2 metre distance.

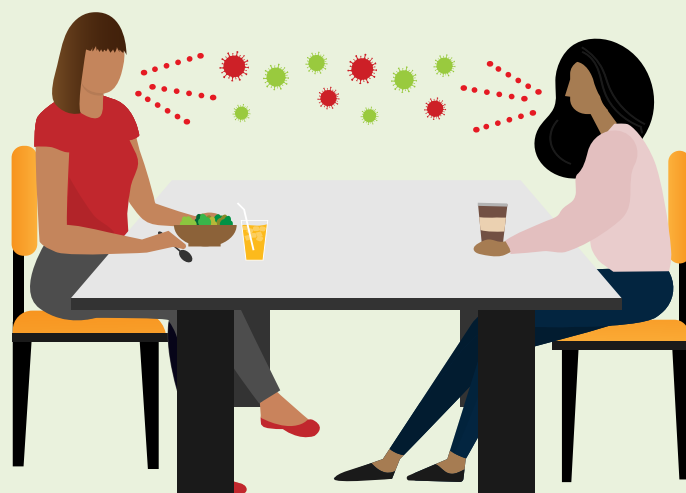


You had close physical contact with a person, such as shaking hands.

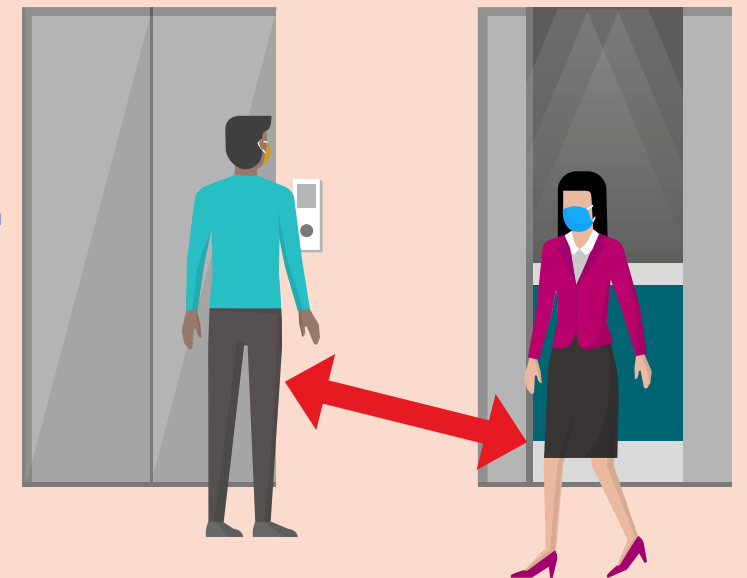
You attended the same meeting but did not have any direct contact.



You went for lunch breaks or socialized with a person.



You passed by a person quickly in a hall or other common area.



A person who works within close proximity to you.

A person who works the same shift as you but in a different area.

